



 EMGA METAL

PRODUCT CATALOGUE

High-Quality Clips and
Accessories for Kitchen Sinks

 EMGA METAL





TURKEY

Mission

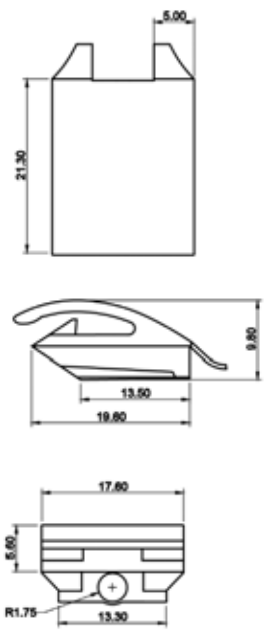
Emga Metal was established in 2013 to operate in the design and manufacture of kitchen sink clips and accessories.

As a principle, Emga Metal, which is accepted to be innovative and reliable, is specialized producing high-quality special design sink accessories.

All the products of Emga Metal are tested and verified by well-known sink manufacturers from all around the world regularly.

Vision

Emga Metal aims to present quality and reliability to new customers and it is always a pleasure to satisfy current customers. Emga Metal targets to increase its production power by considering not to lose its flexibility to meet any special demands of the customers.



▶ Product Information

- Recommend for inset or flush mount installations
- Used to fix the sinks upon the counter
- The manual installation with a screwdriver to be used

Material	C45 / C67 / 51CRV4 and PA 6 Plastic
Surface Treatment	Quenched Coated
Color Selection	Blue, Red, Black



▶ Installation



Inset



Flush mount

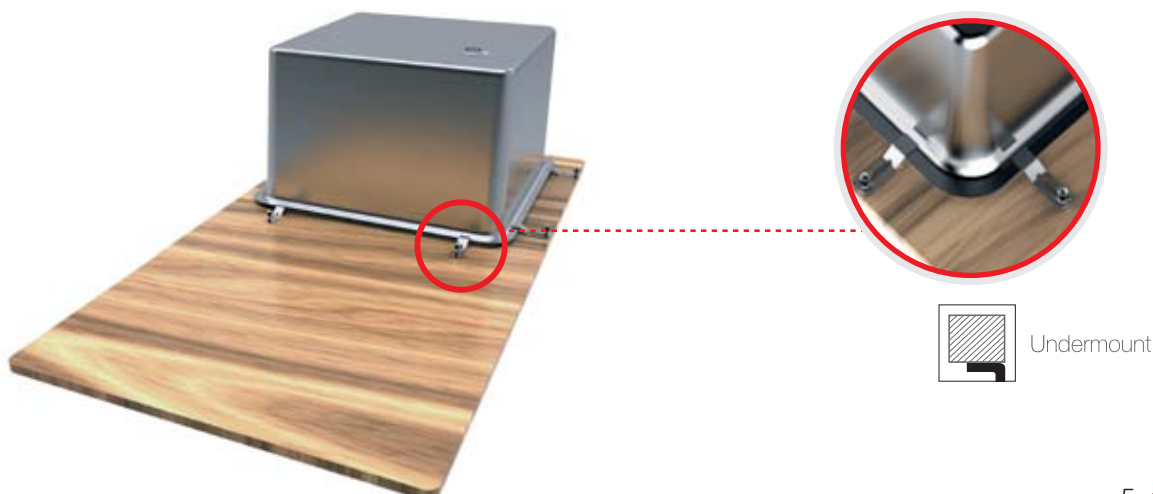


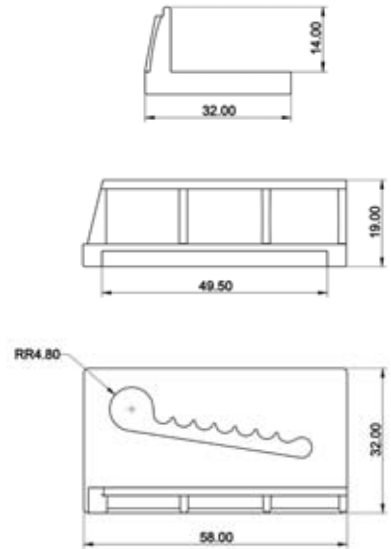
▶ Product Information

- Recommend for under mount type installations
- Used to fix the sinks upon the counter and hold the weight of the sinks
- The manual installation with no tool

Material	DC01 Steel
Surface Treatment	Coated

▶ Installation





▶ Product Information

- Recommend for outset type installations
- Used to fix the sinks upon the counter and hold the weight of the sinks
- The manual installation with a screwdriver to be used

Material	PA 6 Plastic
Color Selection	Blue, Red, Black



▶ Installation





▶ Product Information

- Recommend for inset and flush mount type installations
- Used to fix the sinks upon the counter and hold the weight of the sinks
- The manual installation with a scwdriver to be used

Material	201 Type Stainless Steel
----------	--------------------------

▶ Installation



Inset



Flush mount

EMGA METAL ▶ S5

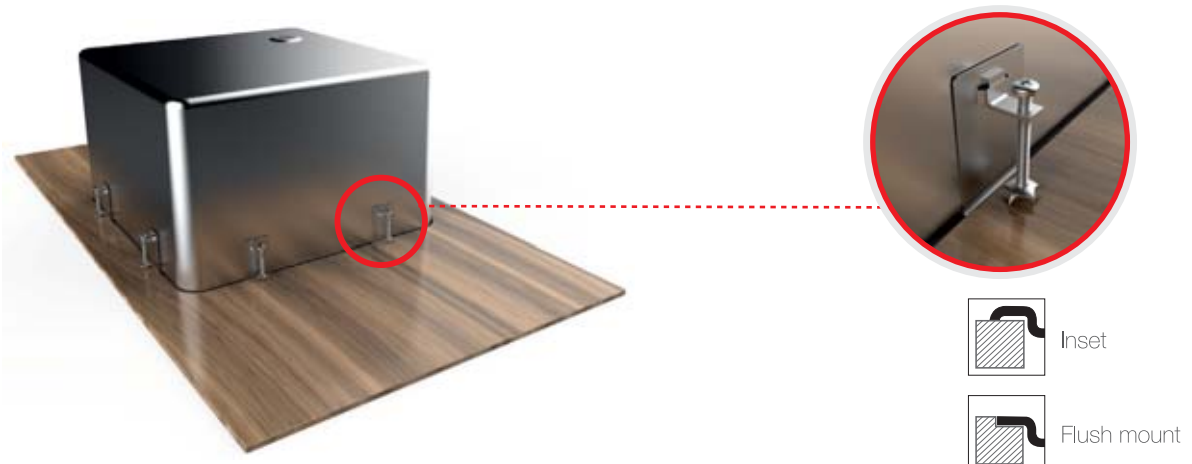


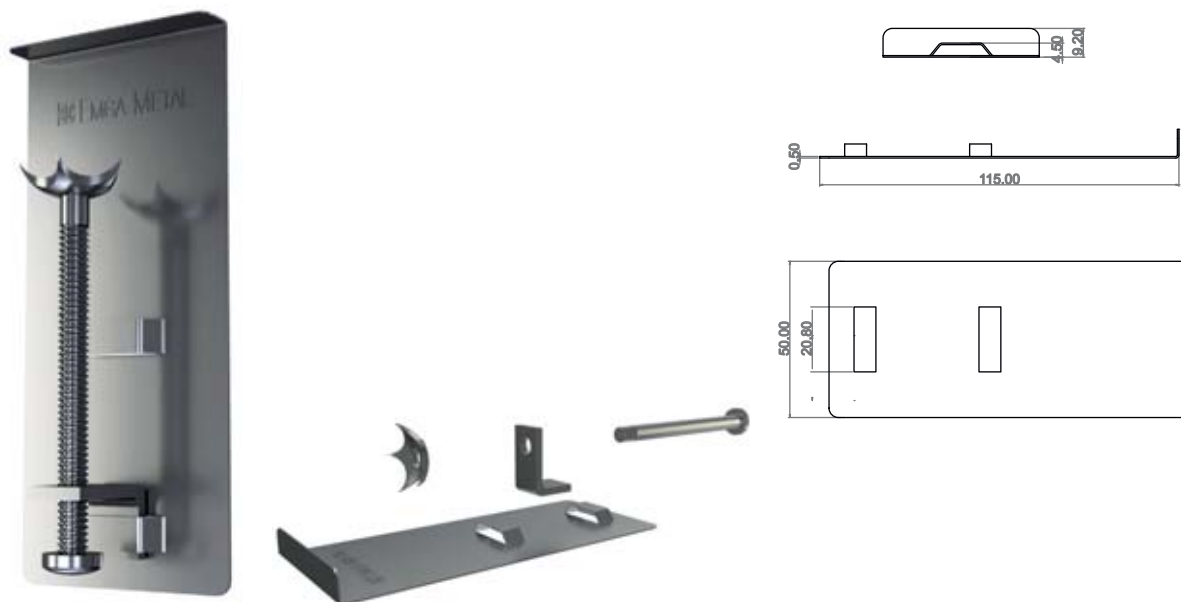
▶ Product Information

- Recommend for inset and flush mount type installations
- Used to fix the sinks upon the counter and hold the weight of the sinks
- The manual installation with a scwdriver to be used

Material	201 Type Stainless Steel
----------	--------------------------

▶ Installation



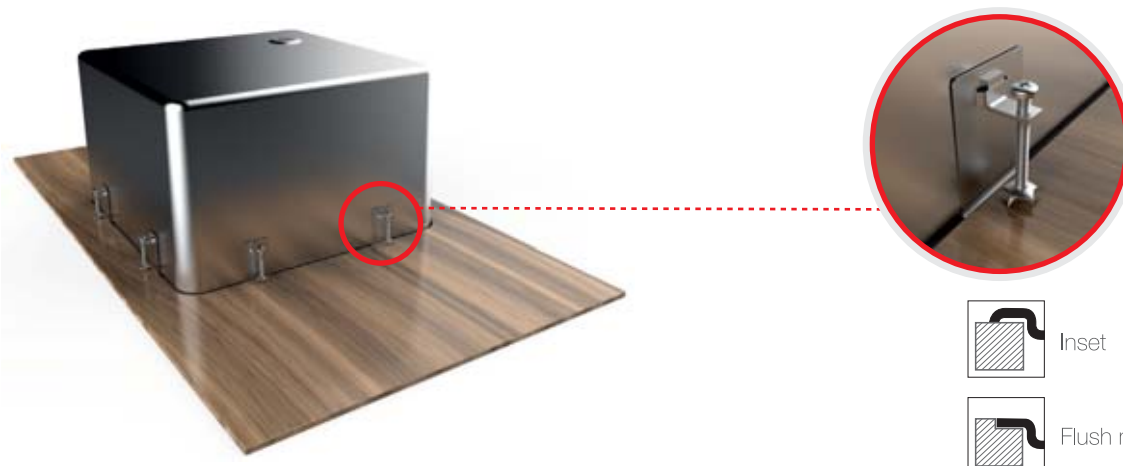


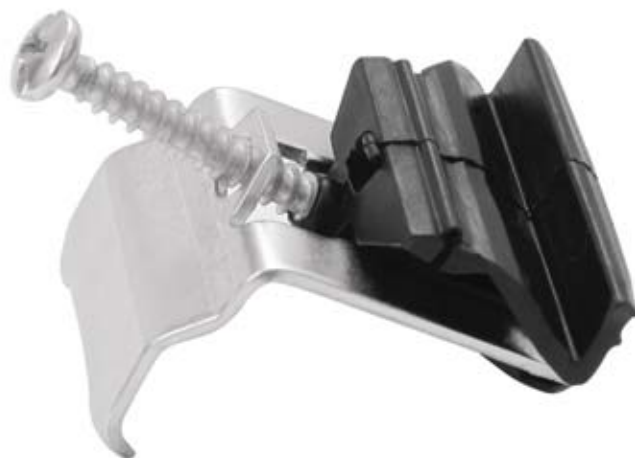
▶ Product Information

- Recommend for inset and flush mount type installations
- Used to fix the sinks upon the counter and hold the weight of the sinks
- The manual installation with a scwdriver to be used

Material	201 Type Stainless Steel
----------	--------------------------

▶ Installation





▶ Product Information

- Recommend for inset or flush mount installations
- Used to fix the granite sinks upon the counter
- The manual installation with a screwdriver to be used



Material	C45 / C67 / 51CRV4 and PA 6 Plastic
----------	-------------------------------------



Inset



Flush mount

▶ Installation





▶ Product Information

- Recommend for inset or flush mount installations
- Used to fix the sinks upon the counter
- The manual installation with a screwdriver to be used

Material	C45 / C67 / 51CRV4
----------	--------------------



Inset



Flush mount

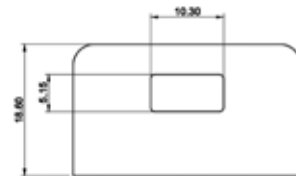
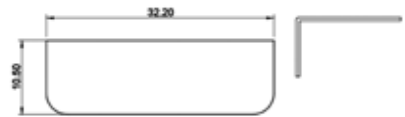


▶ Installation

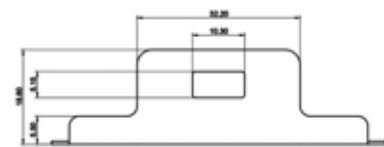
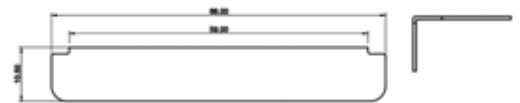


EMGA METAL ▶ S1P / S1PP

S1P



S1PP

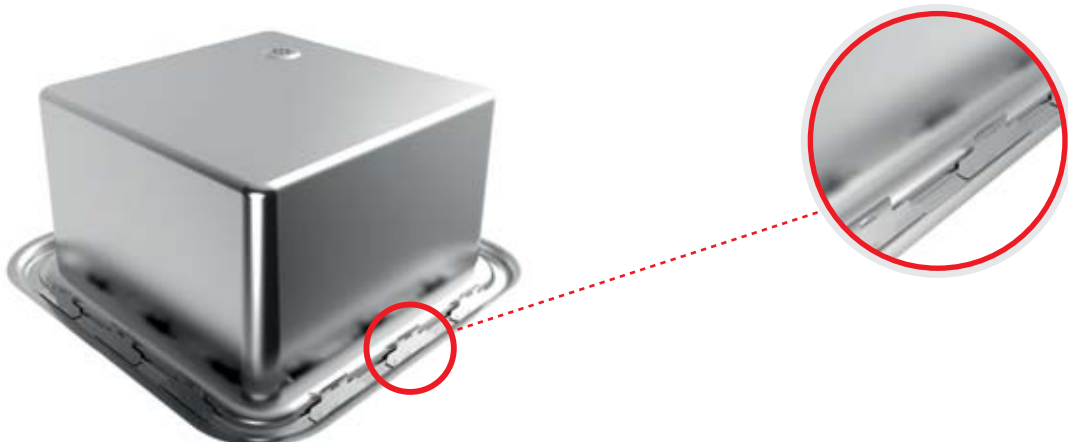


▶ Product Information

- Used with Emga S1
- Can be joint by laser welding or adhesive

Material	201 Type Stainless Steel
----------	--------------------------

▶ Installation





▶ Product Information

- Recommend for all kind of stainless steel sinks
- Used to cover unused holes of the sinks
- The manual installation with no tool

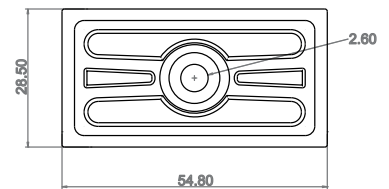
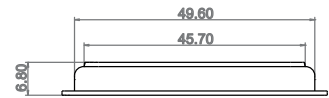
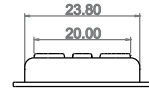
Material	201 Type Stainless Steel and PA 6 Plastic
Surface Treatment	Brushed or Satin
Color Selection	Black, Gray, Creamy



▶ Installation



EMGA METAL ▶ A2



▶ Product Information

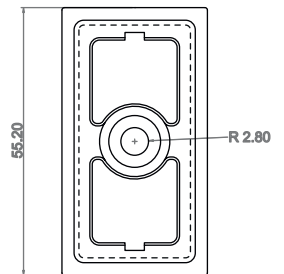
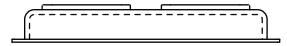
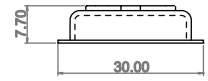
- Recommend for stainless steel sinks which have square overflow
- Used to cover square overflows with logo laying on
- The manual installation with no tool

Material	201 Type Stainless Steel
Surface Treatment	Brushed or Satin



▶ Installation





▶ Product Information

- Recommend for stainless steel sinks which have square overflow
- Used to cover square overflows with logo laying on
- The manual installation with no tool

Material	201 Type Stainless Steel
Surface Treatment	Brushed or Satin



▶ Installation





▶ Product Information

- Produced from Stainless Steel and Plastic
- Used for drying all kind of food
- Outside dimensions 29*44 cm

Material	201 Type Stainless Steel
----------	--------------------------





▶ Product Information

- Produced from Stainless Steel and Plastic
- Used for drying all kind of food
- Outside dimensions 34*42 / 34*44 cm

Material	201 Type Stainless Steel
----------	--------------------------



EMGA METAL ► CHOPPING BOARDS

► Product Information

- Produced from Bamboo / Iroko / Beech
- Used to chopping all kind of food and drying them



EMGA-CB1 55x40 cm



EMGA-CB2 35x40 cm



EMGA-CB3 $\varnothing 36$ - $\varnothing 37$
 $\varnothing 39$ cm



EMGA-CB4 $\varnothing 44$ cm



EMGA-CB5 40x40 cm
41x41 cm



EMGA-CB6 21x40 cm



EMGA-CB7 30x42 cm



EMGA-CB8 28x54 cm



EMGA-CB9



▶ Product Information



- Produced from tempered glass
- Used to chopping all kind of food and drying them
- Outside dimensions 21*40 cm
- Color: Black / White



EMGA-CB11



EMGA-CB10

EMGA SP



[Eva and Membrane soundpad models can be produced in all dimensions.]

▶ Product Information

- Produced from EVA foam or Bituminous Waterproofing Membrane
- Used for sound insulation
- All dimensions can be produced according to order

EMGA ST






[Eva and Membrane sealing tape models can be produced in all dimensions.]

▶ Product Information

- Produced from EVA foam or Bituminous Waterproofing Membrane
- Used for waterproof sealing
- All dimensions can be produced according to order

 EMGA METAL

 Akşaburgaz Mah. Alkop San. Sit.
1592.Sok. A/4 Blok, No:2E/11
34522 Esenyurt/İSTANBUL-TURKEY
 info@emgаметal.com
 www.emgаметal.com